

AKYÜZLÜ

TECHNICAL CATALOGUE 2017



CRAPEX
Rail Clips

RHEINFALL
GR-80 / GR-100 Lifting Equipments

ADS

**ORANGE
FORCE**

AKYÜZLÜ®

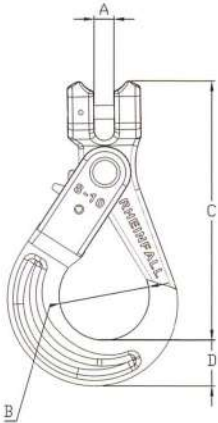
GRADE 80 SELF LOCKING HOOK

mm



RHEINFALL® Clevis self locking hook EN1677-3, grade 8

- **Material** : Alloy steel, grade 8, quenched and tempered
- **Safety factor** : MBL equals 5 x WLL
- **Standard** : EN 1677-3
- **Finish** : Painted yellow or red
- **Certification** : 2.1-2.2-3.1



Size	Dimensions				Working Load Limit / Ton
	A	B	C	D	
8-8	10	42	132	28	2
8-10	13	59	167	33	3.15
8-13	15	67	214	43	5.3

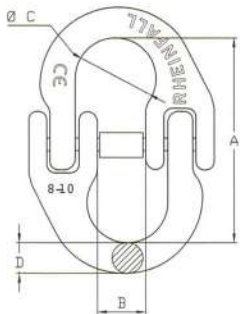
GRADE 80 CONNECTING LINK

mm



RHEINFALL® connecting links

- **Material** : Grade 8, alloy steel
- **Safety factor** : MBL equals 5 x WLL
- **Standard** : Generally to EN 1677-1
- **Finish** : Painted yellow or red
- **Certification** : 2.1-2.2-3.1

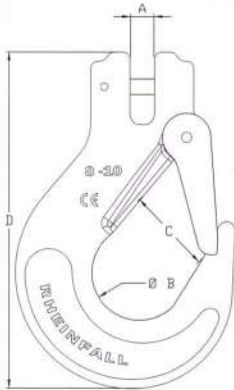


Size	Dimensions				Working Load Limit / Ton
	A	B	Ø C	D	
8-8	56	13	20	10	2
8-10	69	19	28	12	3.15
8-13	89	22	33	16	5.3



RHEINFALL® Clevis sling hook EN1677-2, grade 8

- **Material** : Alloy steel, grade 8, quenched and tempered
- **Safety factor** : MBL equals 5 x WLL
- **Standard** : EN 1677-2
- **Finish** : Painted yellow or red
- **Certification** : 2.1-2.2-3.1

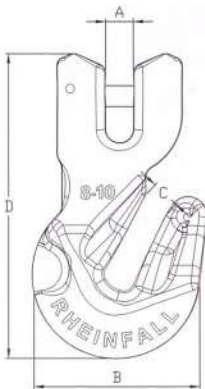


Size	Dimensions				Working Load Limit / Ton
	A	B	C	D	
8-8	10	37	30	130	2
8-10	13	43	39	161	3.15
8-13	15	55	51	195	5.3

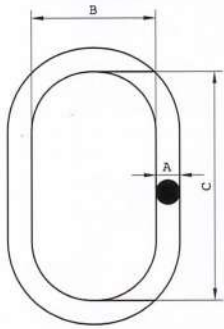


RHEINFALL® Shortening Hook with Safety Pin EN1677-1, grade 8

- **Material** : Alloy steel, grade 8, quenched and tempered
- **Safety factor** : MBL equals 5 x WLL
- **Standard** : EN 1677-1
- **Finish** : Painted yellow or red
- **Certification** : 2.1-2.2-3.1



Size	Dimensions				Working Load Limit / Ton
	A	B	C	D	
8-8	10	57	10	104	2
8-10	13	71	12	126	3.15
8-13	18	92	15	165	5.3



RHEINFALL® Master links, grade 8

- **Material** : Grade 8, alloy steel
- **Un-welded production**
- **Safety factor** : MBL equals 5 x WLL
- **Standard** : Generally to EN 1677-4
- **Finish** : Painted yellow or red
- **Certification** : 2.1-2.2-3.1

Chain diameter / mm	Dimensions			Working Load Limit / Ton
	A	B	C	
6	13	50	90	1.2
8	16	60	110	2
10	18	70	130	3.15
13	22	90	160	5.3
16	26	100	180	8
18	32	125	230	10
20	32	125	230	12.5

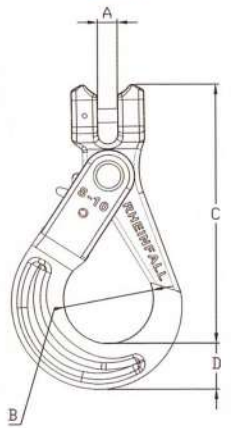


GRADE 100 SELF LOCKING HOOK



RHEINFALL® Self Locking Hook, grade 10

- **Material** : Alloy steel, grade 10, quenched and tempered
- **Safety factor** : MBL equals 5 x WLL
- **Finish** : Painted blue
- **Certification** : 2.1-2.2-3.1



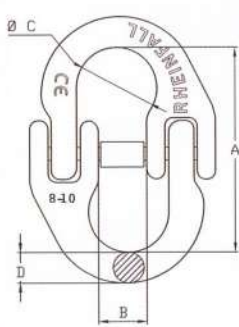
Size	Dimensions				Working Load Limit / Ton
	A	B	C	D	
8-8	10	42	132	28	2,5
8-10	13	59	167	33	4
8-13	15	67	214	43	6,7

GRADE 100 CONNECTING LINK



RHEINFALL® connecting links, grade 10

- **Material** : Grade 10, alloy steel, quenched and tempered
- **Safety factor** : MBL equals 5 x WLL
- **Finish** : Painted blue
- **Certification** : 2.1-2.2-3.1

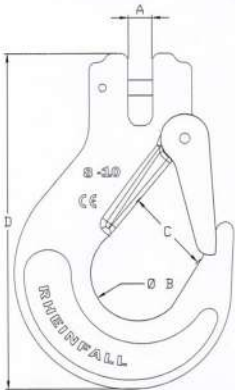


Size	Dimensions				Working Load Limit / Ton
	A	B	Ø C	D	
8-8	56	13	20	10	2,5
8-10	69	19	28	12	4
8-13	89	22	33	16	6,7



RHEINFALL® Clevis sling hook, grade 10

- **Material** : Alloy steel, grade 10, quenched and tempered
- **Safety factor** : MBL equals 5 x WLL
- **Finish** : Painted blue
- **Certification** : 2.1-2.2-3.1

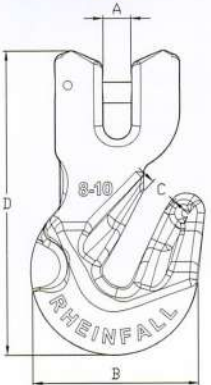


Size	Dimensions				Working Load Limit / Ton
	A	B	C	D	
8-8	10	37	30	130	2,5
8-10	13	43	39	161	4
8-13	15	55	51	195	6,7

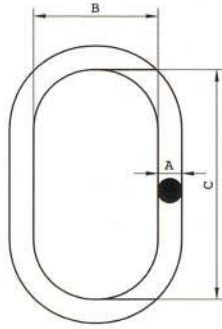


RHEINFALL® Shortening Hook with Safety Pin, grade 10

- **Material** : Alloy steel, grade 10, quenched and tempered
- **Safety factor** : MBL equals 5 x WLL
- **Finish** : Painted blue
- **Certification** : 2.1-2.2-3.1



Size	Dimensions				Working Load Limit / Ton
	A	B	C	D	
8-8	10	57	10	104	2,5
8-10	13	71	12	126	4
8-13	18	92	15	165	6,7



RHEINFALL® Master links, grade 10, quenched and tempered

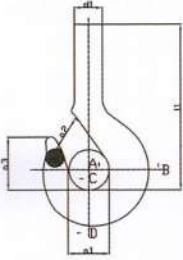
- **Material** : Grade 10, alloy steel
- **Un-welded production**
- **Safety factor** : MBL equals 5 x WLL
- **Finish** : Painted blue
- **Certification** : 2.1-2.2-3.1

Chain diameter / mm	Dimensions			Working Load Limit / Ton
	A	B	C	
6	13	50	90	2
8	16	60	110	2,5
10	18	70	130	4
13	22	90	160	6,7
16	26	100	180	10
18	32	125	230	12,5
20	32	125	230	15

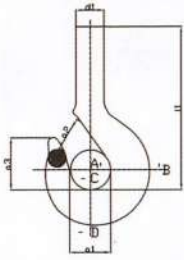




RSN Nr. 006 - 40 arası kancalar için



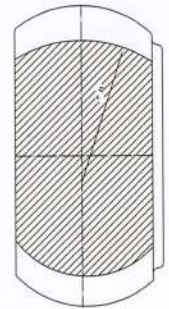
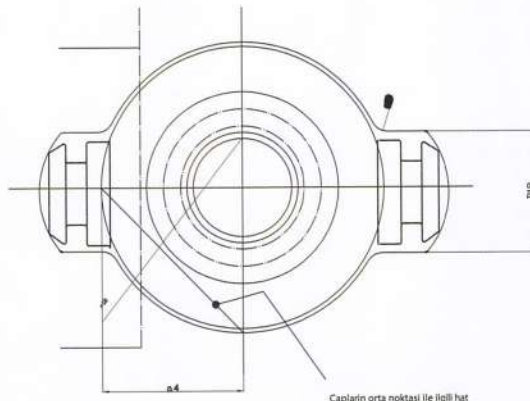
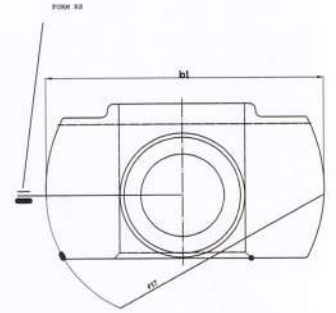
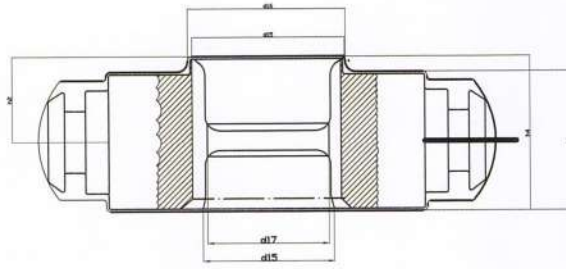
RFN Nr. 50 - 250 arası kancalar için



Hook Nr.	a1	a2	a3	b1	b2	d1	h1	h2	l1	Weight in kg
0.5	43	34	49	29	24	24	37	31	167	1,60
0.8	48	38	54	35	29	30	44	37	186	2,30
1	50	40	57	38	32	30	48	40	197	3,20
1.6	56	45	64	45	38	36	56	48	224	4,50
2.5	63	50	72	53	45	42	67	58	253	6,30
4	71	56	80	63	53	48	80	67	285	8,80
5	80	63	90	71	60	53	90	75	318	12,30
6	90	71	101	80	67	60	100	85	380	17,10
8	100	80	113	90	75	67	112	95	418	24,00
10	112	90	127	100	85	75	125	106	452	34,00
12	125	100	143	112	95	85	140	118	510	47,00
16	140	112	160	125	106	95	160	132	582	66,00
20	160	125	180	140	118	106	180	150	653	95,00
25	180	140	202	160	132	118	200	170	724	136,00
32	200	160	225	180	150	132	224	190	796	187,00
40	224	180	252	200	170	150	250	212	893	264,00
50	250	200	285	224	190	170	280	236	990	430,00
63	280	224	320	250	212	190	315	265	1120	600,00
80	315	250	358	280	236	212	355	300	1270	860,00
100	355	280	402	315	263	236	400	335	1415	1220,00
125	400	315	450	355	300	265	450	375	1590	1740,00
160	450	355	505	400	335	300	500	425	1790	2480,00
200	500	400	565	450	375	335	560	475	2048	3420,00
250	560	450	635	500	452	375	630	530	2305	4800,00

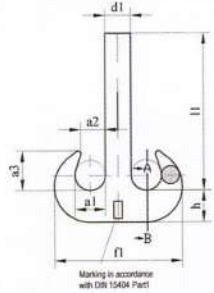


Model	Nr.	a4	b1	b2	d15	d16	d17	d18	h1	h2	h4	r17	r18	r19	r20	Kg
RS	08 & 1	26	50	88	22	-	21	28	30	15	-	50	42	5	2	0,6
	1,6	32	65	100	27	-	22	28	30	16	-	65	42	5	2	0,9
	2,5	38	80	125	32	-	27	33	40	21,5	-	80	50	6	2	1,6
	4	44	90	140	38	-	33	38	45	24	-	90	58	6	2	2,4
	5	52	100	165	40	66	34	45	50	27,5	47	100	66	6	3	3,5
	6	62	12	185	45	76	38	50	55	30	52	125	76	6	3	5,5
	8	73	140	215	52	86	44	55	60	32,5	57	140	86	8	3	8
	10	83	160	230	60	96	52	60	65	35	62	160	96	8	3	11
	12	90	180	270	68	106	58	66	78	42	82	180	106	8	4	15
	16	95	190	275	73	116	64	76	90	47	88	190	116	10	4	19
	20	102	200	295	85	128	72	88	95	51	92	200	126	10	4	24
	25	112	220	318	95	138	80	98	105	56	102	220	138	12	4	32
	32	130	260	378	105	170	90	108	115	62	110	260	157	16	6	48
	40	145	285	415	118	190	102	120	130	70	125	285	175	20	6	65

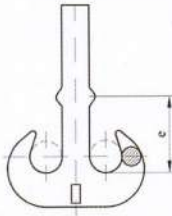


DIN 15402 RAMSHORN HOOK

mm



Marking in accordance with DIN 15404 Part 1



Marking and remaining dimensions as for types RS and RF

Types RS and RSN

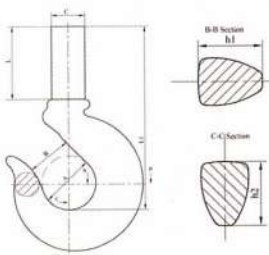
Types RF and RFN



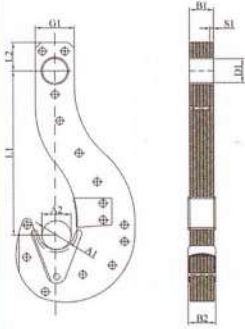
Hook Nr.	a1	a2	a3	b1	d1	e	f1	h	l1	Weight in KG			
										RS	RSN	RF	RFN
4	56	45	73	48	48	124	238	60	280	9,00	9,7		
6	71	56	92	60	60	160	301	75	375	15,50	16,8		
8	80	63	103	67	67	182	337	85	415	24,00	25,3		
10	90	71	116	75	75	192	377	95	450	34,40	35,5	35	36,3
12	100	80	130	85	85	210	421	106	510	48,00	49,5	49	50,5
16	112	90	146	95	95	237	471	118	580	67,60	69,7	69	71,1
20	125	100	163	106	106	265	531	132	650	95,00	97,5	97	99,5
25	140	112	182	118	118	315	598	150	715	132,00	135	135	138
32	160	125	205	132	132	335	672	170	790	189,00	193	193	197
40	180	140	230	150	150	375	754	190	885	274,00	280	280	286
50	200	160	260	170	170	420	842	212	965			388	394
63	224	180	292	190	190	460	944	236	1090			539	547
80	250	200	325	212	212	515	1062	265	1235			750	759
100	280	224	364	236	236	575	1186	300	1375			1050	1060
125	315	250	408	265	265	645	1330	335	1550			1480	1491
160	355	280	458	300	300	725	1505	375	1745			2100	2115
200	400	315	515	335	335	800	1685	425	1998			3000	3015
250	450	355	580	375	375	875	1885	475	2250			4250	4268

AK-7526 SHANK HOOK

mm



Working Load Limit / Ton	Dimensions						
	A	B	C	L	L1	H1	H2
2.5	38	32	26	65	137	30	26
3.2	41	33	30	85	165	34	31
5.4	50	37	35	85	185	42	38
8	76	60	47	105	260	65	58
11.5	82	65	52	108	275	75	66
16	105	90	65	140	353	90	76
22/30	130	110	81	240	504	109	85



DIN 15407 LAMELLED HOOK

mm

- Pins are forging in closed die
- Pins are applying with hot pressing method

Hook Nr.	Hook										
	a1	a2	b1	b2	d1	g1	l1	l2	s1		
16	110	130	64	96	100	220	1000	170	16	2	32
20		145	64	96						2	40
25		160	80	112						3	50
25	130	160	64	96	125	280	1120	200	16	2	50
32		180	80	112						3	63
40		200	112	144						5	80
40	150	200	80	112	160	340	1250	250	20	2	80
50		225	100	132						3	100
63		225	140	172						5	125
63	170	225	125	157	180	380	1400	300	25	3	125
80		250	150	182						4	160
100		250	175	207						5	200
100	205	250	175	207	225	460	1600	350	25	5	200
125		280	200	232						6	250
160		320	250	282						8	320
160	260	320	225	265	250	560	1800	420	25	7	320
200		360	275	315						9	400
250		400	325	365						11	500
250	300	400	315	355	290	620	2000	470	35	7	500
320		500	385	425						9	630

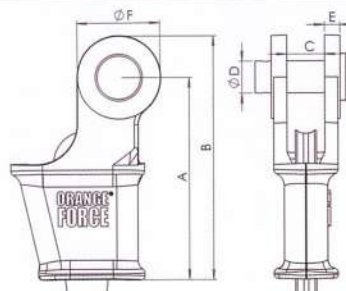
ORANGE FORCE OPEN WEDGE SOCKET - AK 730

mm



- Material : High tensile steel
- Standard : Generally to EN 13411-6
- Finish : Hot dipped galvanized

Number	Rope Diameter (mm)	Size (inch)	Working Load Limit / Ton	A	B	C	D	E	F	Weight kg
1	11-13	1/2	4	174	146	25	25	12	57	2,1
2	14-16	5/8	5	211	176	31	30	15	70	4
3	18-19	3/4	8	252	212	38	35	16	87	7
4	20-22	7/8	11	288	246	44	41	21	95	10
5	24-26	1	15	329	280	46	51	27	100	15
6	27-29	1 1/8	18	375	310	60	57	27	130	21
7	30-32	1 1/4	22.5	423	350	65	64	28	146	31
8	34-36	1 3/8	25	474	400	69	64	28	148	37
9	37-39	1 1/2	32	540	455	80	75	35	165	51

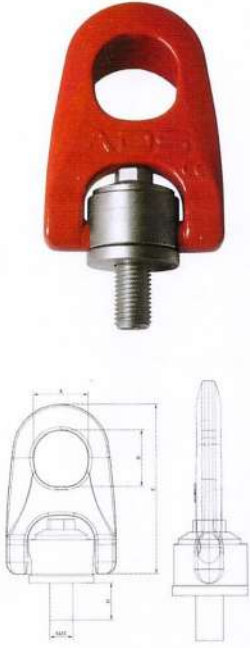


SWIVEL EYEBOLT

mm

ADS® AK-400 Double Swivel Eyebolt

- Generally to EN 1677
- Safety factor WLLx5
- Steel with a high resistance, class > 8
- Two ways of tightening: either by open-ended spanner or by Allen key
- From M8 to M30 as standard; for loads from 0.3 t to 6.3 t
- Also available in stainless steel and "female" version



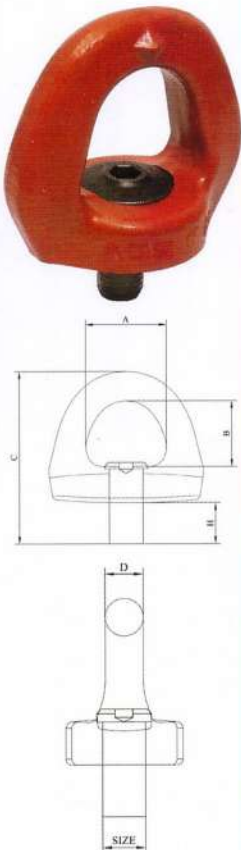
Size	Dimensions				Working Load Limit / Ton
	A	B	C	H	
M8	29	27	85	15	0.3
M10	29	27	85	20	0.6
M12	29	27	85	20	1
M14	38	36	120	38	1.3
M16	38	36	120	38	1.6
M18	38	36	120	38	2
M20	38	36	120	38	2.5
M24	60	55	175	50	4
M30	60	55	175	50	6.3

HEAVY DUTY EYEBOLT

mm

ADS® AK-450 Heavy Duty Swivel Eyebolt
Generally to EN-1677

- Tightening by Allen key
- Permits the hook to move parallel to the supporting face of the ring being drawn at 90°
- From M 08 to M48 as standard; for loads from 0.3 t to 15 t



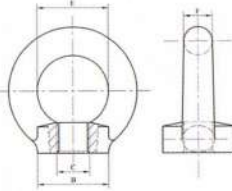
Size	Dimensions					Working Load Limit / Ton
	A	B	C	H	H	
M8	33	27	73	20	13	0.3
M10	33	27	73	20	13	0.6
M12	48	40	105	27	20	1
M16	48	40	105	27	20	1.6
M20	48	40	105	27	20	2.5
M24	72	60	145	31	30	4
M30	72	60	155	39	30	6.3
M36	103	86	215	45	44	10
M42	103	86	225	55	44	12.5
M48	103	86	235	65	44	15

EYENUT

ADS® AK-582 S Eye Nut



- **Material** : Carbon steel, C15
- **Safety factor** : MBL equals 6 x WLL
- **Standard** : Generally to DIN 582
- **Finish** : Electro-galvanized
- **Certification** : 2.1-2.2-CE



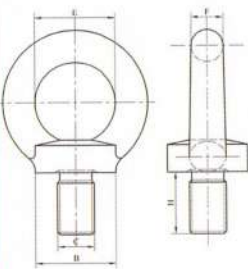
Size	Dimensions				Working Load Limit / Ton
	A	B	C	H	
M27	66	27	56	24	2
M30	66	30	56	24	2.5
M36	67	36	67	28	4
M42	80	42	80	34	6.3
M48	95	48	95	38	8
M56	112	56	112	45	10
M64	125	64	125	50	16

EYEBOLT

ADS® AK-580 C Eye bolt



- **Material** : Carbon steel, C15
- **Safety factor** : MBL equals 6 x WLL
- **Standard** : Generally to DIN 580
- **Finish** : Electro-galvanized
- **Certification** : 2.1-2.2-CE



Size	Dimensions					Working Load Limit / Ton
	A	B	C	H	H	
M27	66	27	56	24	39	2
M30	66	30	56	24	39	2.5
M36	67	36	67	28	48	4
M42	80	42	80	34	56	6.3
M48	95	48	95	38	65	8
M56	112	56	112	45	80	10
M64	125	64	125	50	85	16

CLOSED BODY TURNBUCKLES

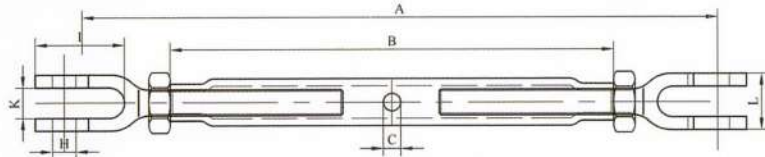
mm



ADS® AK-228 Turnbuckles Jaw - Jaw with cotter pin

- **Material** : Drop forged high tensile steel
- **Safety factor** : MBL equals 5 x WLL
- **Standard** : Generally to ASTM F1145-92 formerly U.S. Federal Specification FF-T-791b
- **Finish** : Hot dipped galvanized
- **Certification** : 2.1-2.2-3.1

SWL TON	Ømm X P	A OPEN	A CLOSE	B	C	H	I	K	L
3	20x2.5	720	520	300	18.5	20	87	27	65
5	27x3	885	610	340	20	25	100	30	75
8	33x3.5	970	720	380	21	30	135	45	100
12	36x4	1110	800	415	23	41	165	64	115
16	42x4.5	1260	960	550	24	45	165	64	115
20	48x5	1580	1220	640	25	50	235	73	160
25	52x5	1620	1260	680	27	58	235	73	160
35	56x5.5	1840	1480	900	35	70	235	73	160



CLOSED BODY TURNBUCKLES

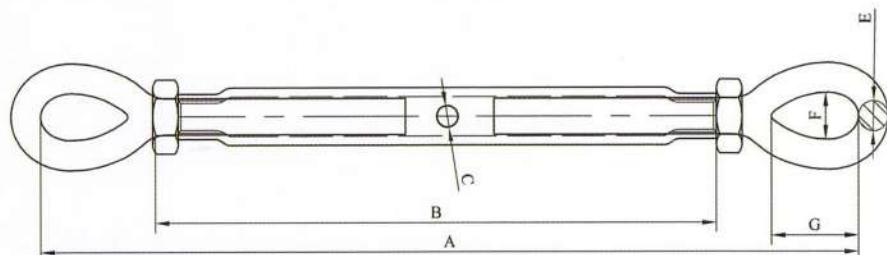
mm



ADS® AK-238 Turnbuckles Eye - Eye with cotter pin

- **Material** : Drop forged high tensile steel
- **Safety factor** : MBL equals 5 x WLL
- **Standard** : Generally to ASTM F1145-92 formerly U.S. Federal Specification FF-T-791b
- **Finish** : Hot dipped galvanized
- **Certification** : 2.1-2.2-3.1

SWL TON	Ømm X P	A OPEN	A CLOSE	B	F	G	E
3	20x2.5	720	540	300	30	60	20
5	27x3	860	620	340	35	70	23
8	33x3.5	980	740	380	45	90	30

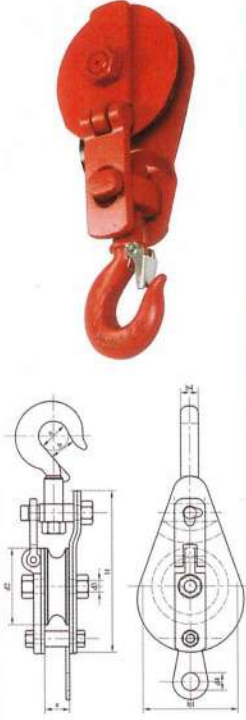


BLOCKS

mm

ADS® AK-700 Snatch blocks with ADS® Hook

- **Material** : Carbon steel,
- **Safety factor** : MBL equals 4 x WLL
- **Finish** : painted
- **Certification** : 2.1-2.2-CE



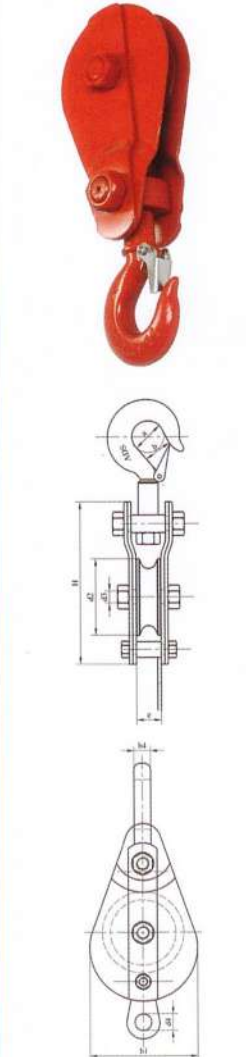
Size D2	Working Load Limit / Ton	Dimensions							
		a	b	b1	b4	d2	d3	d4	H
100	1	39	27	120	20	100	20	18	220
125	2	42	31	145	20	120	24	18	250
150	3	51	39	168	24	140	30	18	275
200	6	64	46	230	28	200	34	24	330
250	10	64	46	290	32	250	36	24	385
300	15	83	67	330	42	300	42	24	460
350	20	105	90	380	42	350	48	25	550

BLOCKS

mm

ADS® AK-800 Snatch blocks with ADS® Hook

- **Material** : Carbon steel,
- **Safety factor** : MBL equals 4 x WLL
- **Finish** : painted
- **Certification** : 2.1 -2.2 - CE



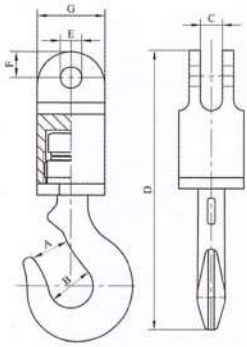
Size D2	Working Load Limit Ton	Dimensions								
		a	b	b1	b4	d2	d3	d4	e	H
100x1	1	39	27.5	120	20	100	20	18	30	220
100x2	1	39	27.5	120	20	100	20	18	65	245
100x3	1	39	27.5	120	20	100	20	18	98	245
125x1	2	42	31	145	20	120	24	24	30	250
125x2	2	42	31	145	20	120	24	24	65	275
125x3	2	42	31	145	20	120	24	24	98	275
150x1	3	51	39	168	24	140	30	25	31	275
150x2	3	51	39	168	24	140	30	25	67	295
150x3	3	51	39	168	24	140	30	25	100	295
200x1	5	76	60	230	28	190	36	25	38	330
200x2	5	76	60	230	28	190	36	25	80	375
200x3	5	76	60	230	28	190	36	25	120	375
300x1	8	83	67	330	32	300	42	35	47	460
300x2	8	83	67	330	32	300	42	35	100	500
300x3	8	83	67	330	32	300	42	35	152	500
350x1	12	105	90	380	42	350	48	40	54	550
350x2	12	105	90	380	42	350	48	40	116	590
350x3	12	105	90	380	42	350	48	40	178	590
410x1	15	130	110	430	42	410	56	45	69	750
410x2	15	130	110	430	42	410	56	45	136	790
410x3	15	130	110	430	42	410	56	45	208	790

JAW-HOOK SWIVEL

mm

ADS® AK-301 Thrust bearing swivels Jaw-Hook

- **Material** : Carbon steel
- **Safety factor** : MBL equals 5 x WLL
- **Finish** : painted black
- **Certification** : 2.1-2.2



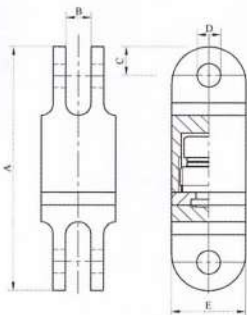
Working Load Limit / Ton	Hook Nr.	Dimensions						
		A	B	C	D	E	F	G
3	1.6	45	59	22.4	238.5	19.1	25.4	74
5	2.5	50	66	25.4	273.1	22.4	28.4	88
8	4	56	75	39.5	333.2	25.4	35.1	108
10	5	63	84	44.5	422	38.1	44.5	118
15	8	80	100	44.5	452	38.1	44.5	128
25	12	100	135	51	543	51	60.5	158
35	16	113	150	51	563	51	60.5	168
45	20	125	172	63.5	646	63.5	76	188

JAW - JAW BEARING SWIVEL

mm

ADS® AK-302 Thrust bearing swivels Jaw - Jaw

- **Material** : Carbon steel
- **Safety factor** : MBL equals 5 x WLL
- **Finish** : painted black
- **Certification** : 2.1 -2.2



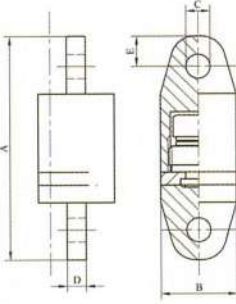
Working Load Limit / Ton	Dimensions				
	A	B	C	D	E
3	235	22.4	25.4	19.1	74
5	275	25.4	28.4	22.4	88
8	335	39.5	35.1	25.4	108
10	420	44.5	44.5	38.1	118
15	450	44.5	44.5	38.1	128
25	543	51	60.5	51	158
35	563	51	60.5	51	168
45	646	63.5	76	63.5	188

EYE - EYE BEARING SWIVEL

mm

ADS® AK-303 Thrust bearing swivels Eye - Eye

- **Material** : Carbon steel
- **Safety factor** : MBL equals 5 x WLL
- **Finish** : painted black
- **Certification** : 2.1 -2.2



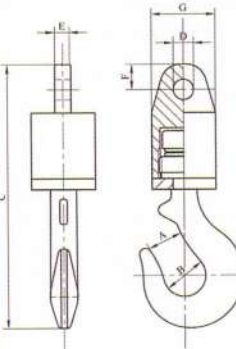
Working Load Limit / Ton	Dimensions				
	A	B	C	D	E
3	241	74	26.2	19,1	31.8
5	267	88	32,5	25.4	31.8
8	313	108	35.8	31.8	38.1
10	390	118	42.9	42.9	47.8
15	433	123	51.5	49.3	54
25	553	158	58.5	57	60.5
35	577	168	58.5	57	60.5
45	646	188	64.5	63.5	76

EYE-HOOK BEARING SWIVEL

mm

ADS® AK-305 Thrust bearing swivels Eye - Hook

- **Material** : Carbon steel
- **Safety factor** : MBL equals 5 x WLL
- **Finish** : painted black
- **Certification** : 2.1- 2.2



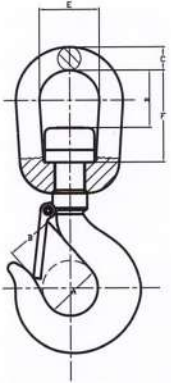
Working Load Limit / Ton	Hook Nr	Dimensions						
		A	B	C	D	E	F	G
3	1.6	45	59	238.5	26.2	19.1	31.8	74
5	2.5	50	66	273.1	32.5	25.4	31.8	88
8	4	56	75	333.2	35.8	31.8	38.1	108
10	5	63	84	422	42.9	42.9	47.8	118
15	8	80	100	452	51.5	49.8	54	128
25	12	100	135	543	58.5	57	60.5	158
35	16	113	150	563	58.5	57	60.5	168
45	20	125	172	646	64.5	63.5	76	188

EYE - HOOK SWIVEL

mm

ADS® AK-306 Swivels Eye – Hook

- **Material** : High tensile steel, quenched and tempered
- **Safety factor** : MBL equals 5 x WLL
- **Standard** : US Federal Spec. RR-C-271, Type VII, Class 2
- **Finish** : hot dipped galvanized
- **Certification** : 2.1 2.2



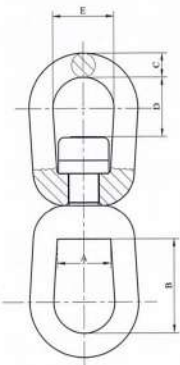
Size inch	Working Load Limit / Ton	Dimensions					
		A	B	C	D	E	F
5/8	2.5	38	32	17	44	39	63
3/4	3.2	41	33	21	49	50	74
7/8	5.4	50	37	23	53	64	81
1	8	76	60	27	60	70	92
1 1/4	11.5	82	65	35	75	79	105
1 3/8	16	105	90	39	78	97	120
1 5/8	22	130	110	50	105	123	160

EYE - EYE SWIVEL

mm

ADS® AK-304 Swivels Eye – Eye

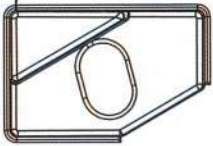
- **Material** : High tensile steel, quenched and tempered
- **Safety factor** : MBL equals 5 x WLL
- **Standard** : US Federal Spec. RR-C-271, Type VII, Class 2
- **Finish** : Hot dipped galvanized
- **Certification** : 2.1-2.2



Size inch	Working Load Limit / Ton	Dimensions				
		A	B	C	D	E
5/8	2.5	36	63	17	44	39
3/4	3.2	46	74	21	49	50
7/8	5.4	57	81	23	53	64
1	8	58	92	27	60	70
1 1/4	11.5	73	105	35	73	79
1 3/8	16	88	120	39	78	97
1 5/8	22	108	160	50	105	123



Welding Point
Welding Bend Δ 4mm



Rail Clip Information

Product Code	C Max	Torque Tightening	Side load	Weight	Material
CRAPEX 400	33 mm	200 Nm	75 kN	0,65 kg	DIN 17100 S 355 J2

Welding Information:

DIN 17100 - Wst Nr: 1.0562 :S 355 J2
NFA 35-501: E36-3
BS 4360 : 50 C
EURO NORM 10025 : S355 JO

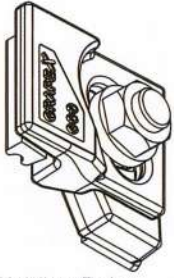
Electrode Information:

DIN 1931 : E51 55B 10 110
AFNOR 81-309 : E51 5/5B 110 26 BH
ISO 2560 : E51 5B 110 26
ASME IIC SFA 5.1 : E 7018-1

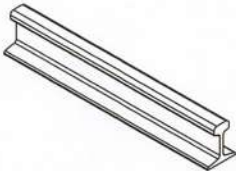
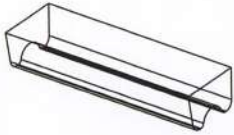
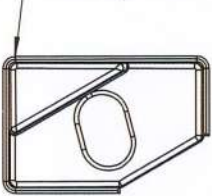
Rubber Informations

Hardness	75° +/- 5°
Tensile Strenght	12,5 N/mm ²
Extention	90%
Operation Temperature	-30° - 130° C
Vibration Reduction	45% - 50%
Volume Reduction	8% - 10%

Rail Type	A	B	E	Weight kg/m	with pad	without pad
A45	45	55	125	22,1	105	105 P
A55	55	65	150	31,8	105	105 P
A65	65	75	175	43,1	105	105 P
CR 104	63,5	127	127	51,59	105	105 P
CR 105	65,1	131,8	131,8	52,09	105	105 P
CR 135	76,2	146	131,8	66,97	105	105 P
S 24	53	115	90	24,43	105	105 P
25 kg/m	50	115	90	25	105	105 P
S 26 (AFNOR)	50	110	10	26,27	105	105 P
27 E1 (27 UNI)	50	120	95	27,06	105	105 P
AFNOR 30	56	125,5	106	29,98	105	105 P
30 E1 (S 30)	60,3	108	108	30,13	105	105 P
33 E1 (S 33)	58	134	105	33,47	105	105 P
36 E1 (36 UNI)	60	130	100	36,26	105	105 P
40 E1 (S 41-R)	67	138	125	40,95	105	105 P
46 E4	65	145	135	46,9	105	105 P
49 E1	67	148	125	49,39	105	105 P
54 E1	70	159	140	57,77	105	105 P
60 E1	72	172	150	60,21	105	105 P



Welding Point
Welding Bend Δ 4mm



Rail Clip Information

Product Code	C Max	Torque Tightening	Side load	Weight	Material
CRAPEX 600	33 mm	250 Nm	125 kN	0,85 kg	DIN 17100 S 355 J2

Welding Information:

DIN 17100 - Wst Nr: 1.0562 :S 355 J2
NFA 35-501: E36-3
BS 4360 : 50 C
EURO NORM 10025 : S355 JO

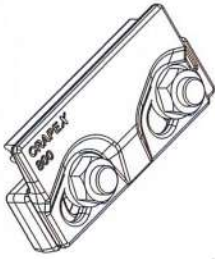
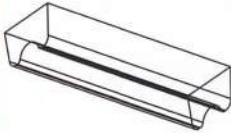
Electrode Information:

DIN 1931 : E51 55B 10 110
AFNOR 81-309 : E51 5/5B 110 26 BH
ISO 2560 : E51 5B 110 26
ASME IIC SFA 5.1 : E 7018-1

Rubber Informations

Hardness	75° +/- 5°
Tensile Strenght	12,5 N/mm ²
Extention	90%
Operation Temperature	-30° - 130° C
Vibration Reduction	45% - 50%
Volume Reduction	8% - 10%

Rail Type	A	B	E	Weight kg/m	with pad	without pad
A 75	75	85	200	56,2	107	107 P
A 100	100	95	200	74,3	107	107 P
A 120	120	105	220	100	107	107 P
A 150	150	150	220	150,3	107	107 P
CR 105	65,1	131,8	131,8	52,09	107	107 P
CR 135	76,2	146	131,8	66,97	107	107 P
CR 171	101,6	152,4	152,4	84,83	107	107 P
MRS 87 A	101,6	152,4	152,4	86,8	107	107 P
CR 175	102,4	152,4	152,4	86,8	107	107 P
MRS 125	120	180	180	125	107	107 P
49 E1	67	149	125	49,39	107	107 P
50 ES	67	148	135	49,9	107	107 P
54 E1	70	159	140	54,77	107	107 P
60 E1	75	172	150	60,21	107	107 P


 Welding Point
 Welding Bend Δ 4mm

Rail Clip Information

Product Code	C Max	Torque Tightening	Side load	Weight	Material
CRAPEX 800	33 mm	155 Nm	125 kN	1,45 kg	DIN 17100 S 355 J2

Welding Information:

DIN 17100 - Wst Nr: 1.0562 :S 355 J2
 NFA 35-501: E36-3
 BS 4360 : 50 C
 EURO NORM 10025 : S355 JO

Electrode Information:

DIN 1931 : E51 55B 10 110
 AFNOR 81-309 : E51 5/5B 110 26 BH
 ISO 2560 : E51 5B 110 26
 ASME IIC SFA 5.1 : E 7018-1

Rubber Informations

Hardness	75° +/- 5°
Tensile Strenght	12,5 N/mm ²
Extention	90%
Operation Temperature	-30° - 130° C
Vibration Reduction	45% - 50%
Volume Reduction	8% - 10%

Rail Type	A	B	E	Weight kg/m
A 45	45	125	125	22,1
A 55	55	150	150	31,8
A 65	65	175	175	43,1
A 75	75	200	200	56,2
A 100	100	200	200	74,3
A 120	120	220	220	100
CR 104	63,5	127	127	51,59
CR 105	65,1	131,8	131,8	52,09
CR 135	76,2	131,8	131,8	66,97
S 24	53	90	90	24,43
25 kg / m	50	90	90	25
AFNOR 30	56	106	106	29,98
30 E1	60,3	108	108	30,13
33 E1	58	105	105	33,147
36 E1	60	100	100	36,26
40 E1	67	125	125	40,95
46 E4	65	135	135	46,9
49 E1	67	125	125	49,39
50 ES	67	135	135	49,9
54 E1	70	140	140	54,77



Welding Point
Welding Bend Δ 4mm



Rail Clip Information

Product Code	C Max	Torque Tightening	Side load	Weight	Material
CRAPEX 1000	33 mm	250 Nm	200 kN	1,50 kg	DIN 17100 S 355 J2

Welding Information:

DIN 17100 - Wst Nr: 1.0562 :S 355 J2
NFA 35-501: E36-3
BS 4360 : 50 C
EURO NORM 10025 : S355 JO

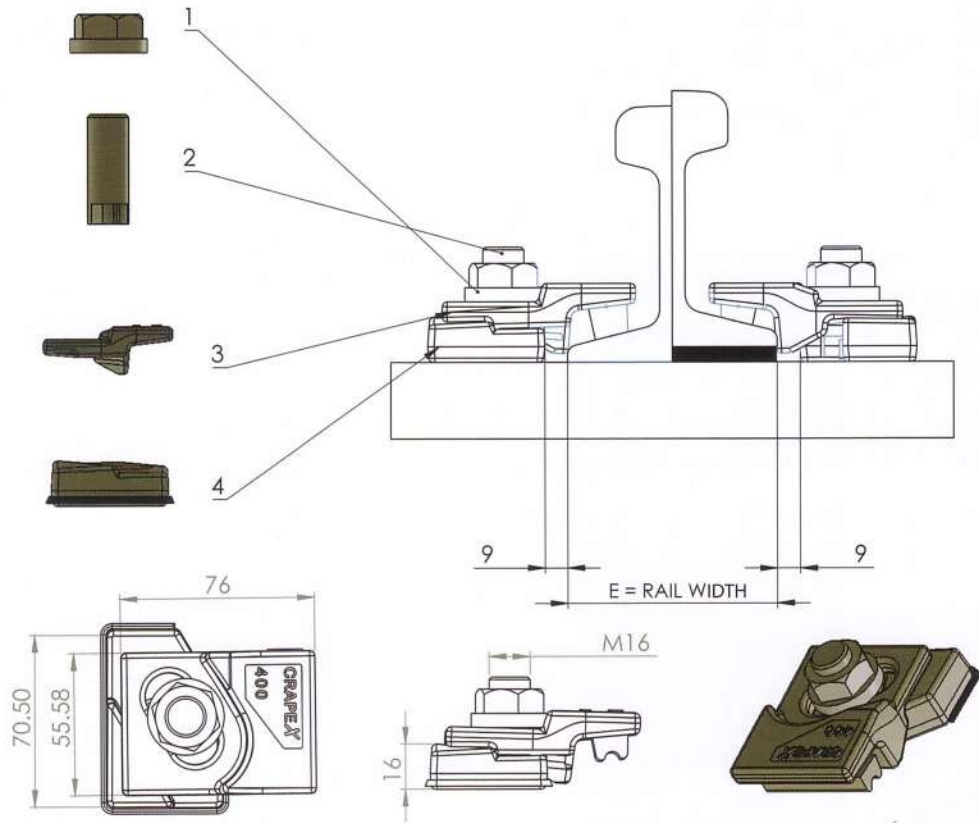
Electrode Information:

DIN 1931 : E51 55B 10 110
AFNOR 81-309 : E51 5/5B 110 26 BH
ISO 2560 : E51 5B 110 26
ASME IIC SFA 5.1 : E 7018-1

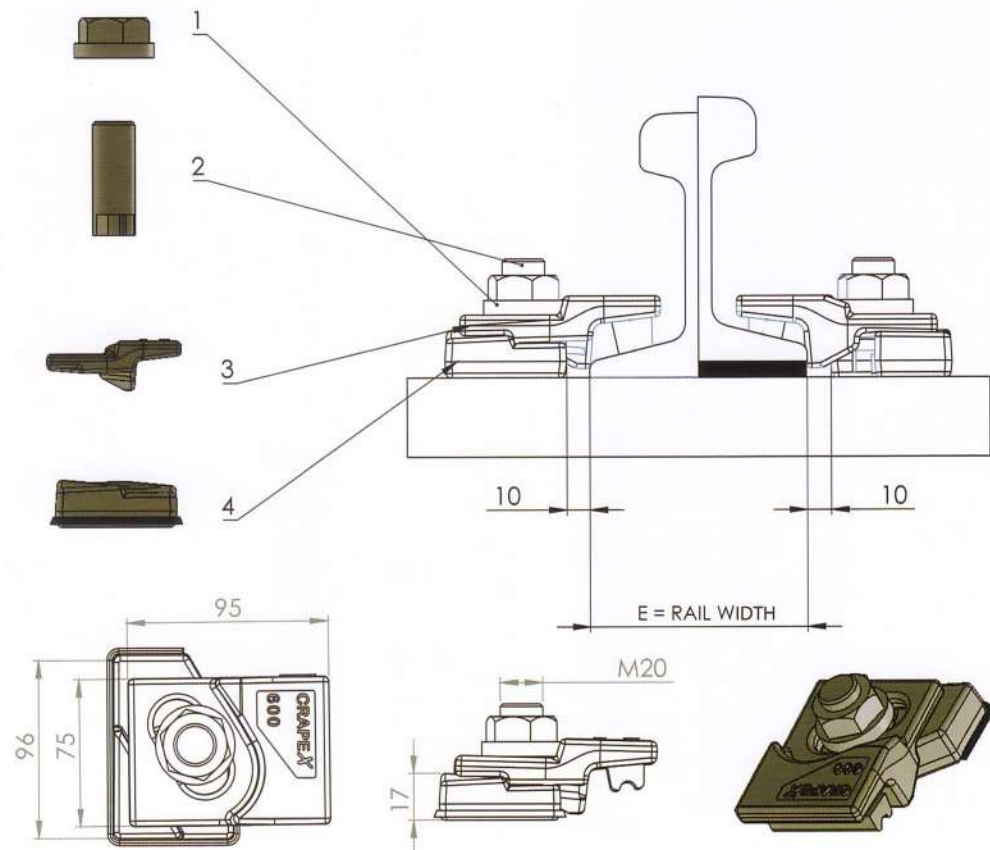
Rubber Informations

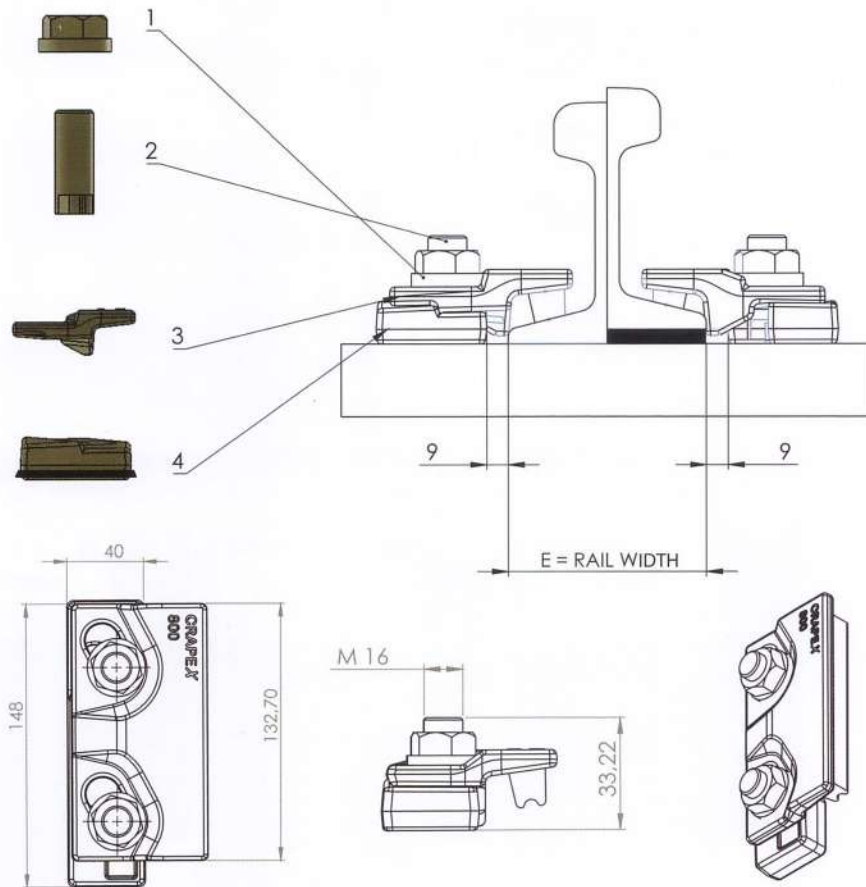
Hardness	75° +/- 5°
Tensile Strenght	12,5 N/mm ²
Extention	90%
Operation Temperature	-30° - 130° C
Vibration Reduction	45% - 50%
Volume Reduction	8% - 10%

Rail Type	A	B	E	Weight kg/m
A 75	75	58	200	56,2
A 100	100	95	200	74,3
A 120	120	105	220	100
A 150	150	150	220	150,3
CR 104	63,5	127	127	51,59
CR 105	65,1	131,8	131,8	52,09
CR 135	76,2	146	131,8	66,97
CR 171	101,6	152,4	152,4	84,83
MRS 87 A	101,6	152,4	152,4	86,8
CR 175	102,4	152,4	152,4	86,8
MRS 125	120	180	180	125
49 E1	67	149	125	49,39
50 ES	67	148	135	49,9
54 E1	70	159	140	54,77
60 E1	72	172	150	60,21

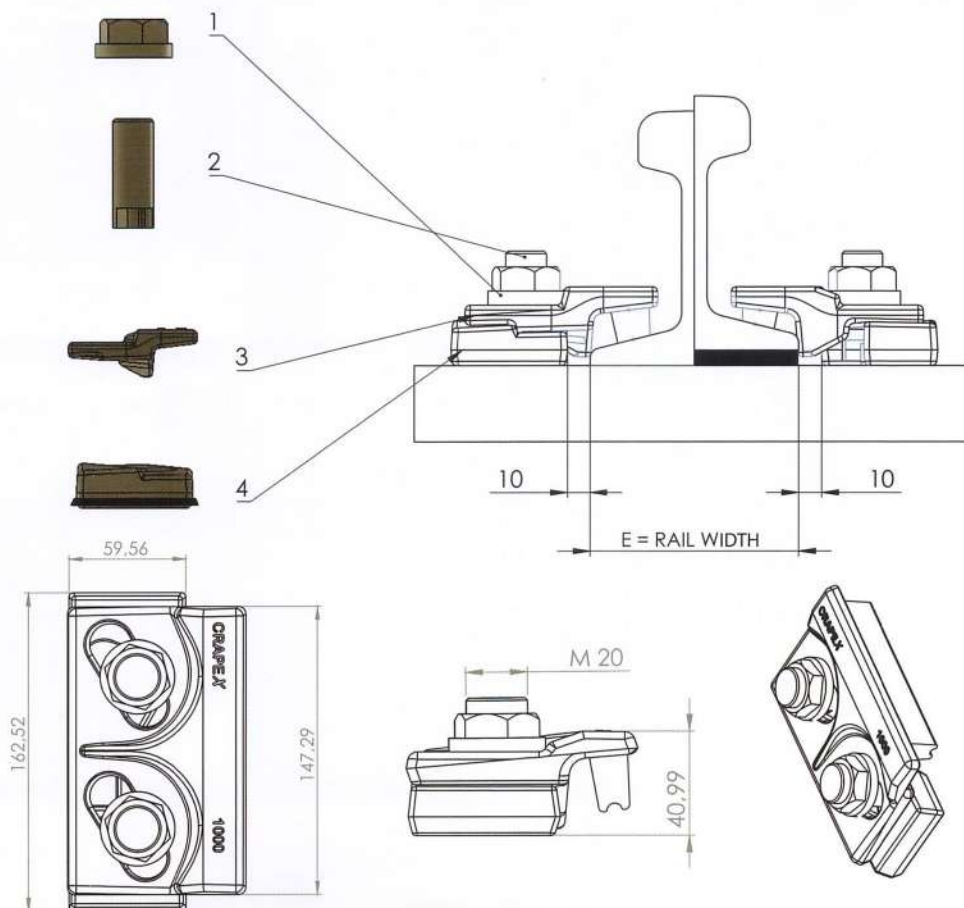


CRAPEX-600 SERIES RAIL CLIPS





CRAPEX-1000 SERIES RAIL CLIPS



AKYÜZLÜ®

AKYÜZLÜ DÖVME ve KALDIRMA EKİPMANLARI SAN. TİC. LTD. ŞTİ.

Head Office & Factory: Kocaeli Dilovası İmes O.S.B.

2. Cad. No:10 41455 Dilovası - Kocaeli / TURKEY

Phone: +90 262 290 87 91 (pbx) Fax: +90 262 290 87 97

info@akyuzlu.com.tr - www.akyuzlu.com.tr